

Aluminium Protection louvres AZR-4

Application

Aluminium protection louvres AZR-4 are suitable for all low pressure air-conditioning, heating and ventilation where supply and exhaust opening require protection against the direct ingress of rain, birds, bigger insects etc.

Description

Aluminium protection louvres AZR-4 are made of extruded aluminium sections galvanised in natural aluminium colour. They consist of supporting frame and specially shaped horizontal vanes and protection screen of galvanised wire. They feature esthetical external appearance.

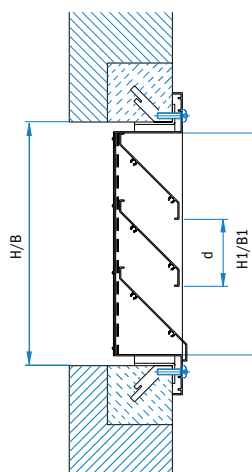
Standard sizes

All combinations of B1 and H1 according to the table of dimensions are possible.

Non-standard dimensions are available on request.

In the case of order where we proceed from the dimension of the hole in the wall or the dimension of the duct, the following combinations of B2 x H2 are possible:

- B2: 200, 300, 400, ..., 2000
- H2: 200, 300, 400, ..., 2000

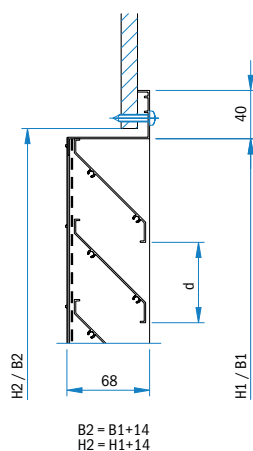


Sizes AZR-4

H1 (mm)	200	250	300	400	500	600	700	800	900	1000	1100	1200	1300	1400	1500	1600	1700	1800	1900	2000
B1 (mm)	200	250	300	400	500	600	700	800	900	1000	1100	1200	1300	1400	1500	1600	1700	1800	1900	2000
n	3	4	4	6	7	8	9	11	12	14	15	16	18	19	21	22	23	25	26	27

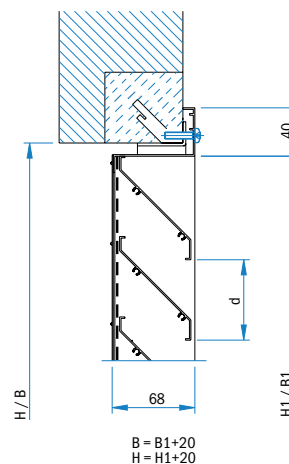
n - number of vanes

Installation types



Protection louvre is fixed with screws directly on duct.

Designation: AZR-4



Protection louvre is fixed with screws to the built-in frame made of steel angle.

Designation: AZR-4/3

