

Steel protection louvres JZR-5, JZR-6

Application

Steel protection louvres JZR-5 and JZR-6 are suitable for all low pressure air-conditioning, heating and ventilation where supply and exhaust opening require protection against the direct ingress of rain, birds, bigger insects etc.

Description

Steel protection louvres JZR-5 and JZR-6 consist of supporting frame and specially shaped horizontal vanes made of galvanised sheet steel with attached protection screen of galvanised wire. At customer's request, steel protection louvers can be powder painted.

Steel protection louvers JZR-5 are classical protection louvers, the only difference being a clearance between the blades, which equals 50 mm, with the depth of the louvers being 50 mm and the width of the edge being 28 mm. Due to their appearance (smaller clearance), they are suitable for smaller openings.

Dimensions JZR-5

Within the range B1 x H1 from 200 x 100 to 1500 x 1000, we produce louvers of optional dimensions.



Dimensions JZR-6

All combinations of B1 and H1 according to the table of dimensions are possible.

Non-standard dimensions are available on request.

Sizes JZR-5

H1 (mm)	100	150	200	250	300	400	500	600	700	800	900	1000						
B1 (mm)			200	250	300	400	500	600	700	800	900	1000	1100	1200	1300	1400	1500	
n	2	3	4	5	6	8	10	12	14	16	18	20						

n - number of vanes

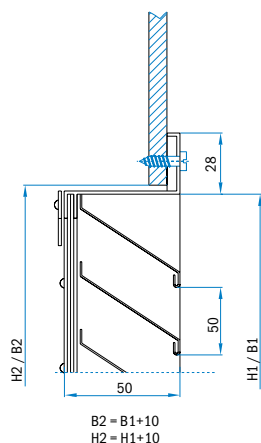
Sizes JZR-6

H1 (mm)	200	250	300	400	500	600	700	800	900	1000	1100	1200	1300	1400	1500	1600	1700	1800	1900	2000
B1 (mm)	200	250	300	400	500	600	700	800	900	1000	1100	1200	1300	1400	1500	1600	1700	1800	1900	2000
n	3	3	4	5	7	8	9	11	12	13	15	16	17	19	20	21	23	24	25	27

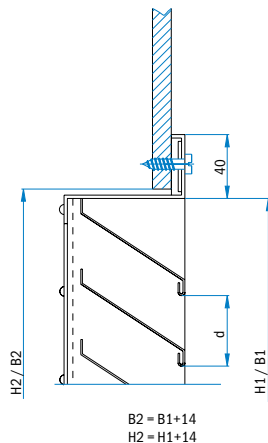
n - number of vanes

Installation types

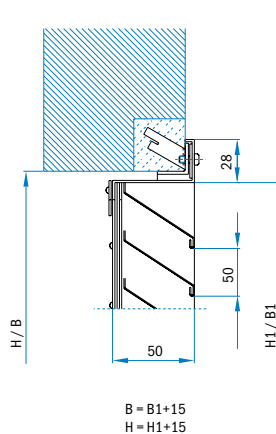
JZR-5



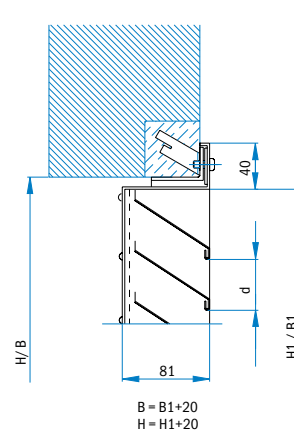
JZR-6



JZR-5/2



JZR-6/3



Protection louvre is fixed with screws directly on duct.

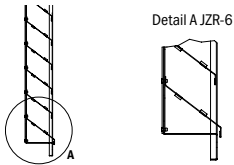
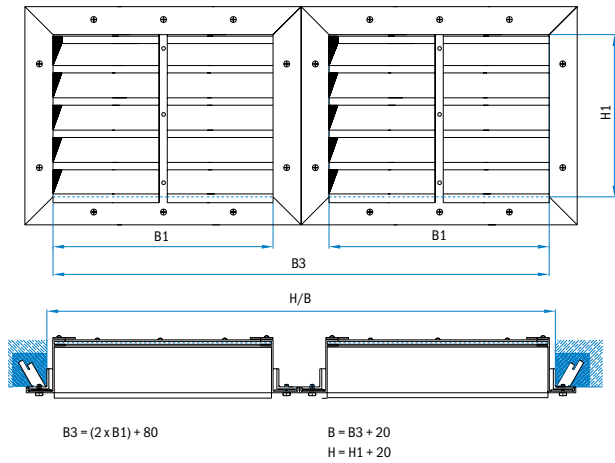
Designation: JZR-5, JZR-6

Protection louvre is fixed with screws to the built-in frame made of steel angle.

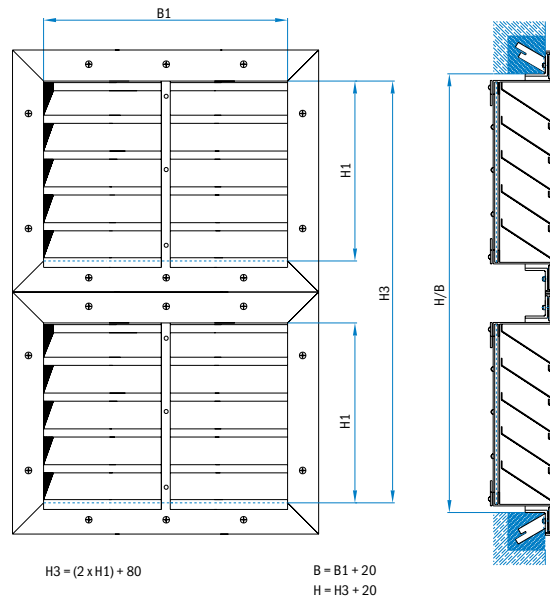
Designation: JZR-5/2, JZR-6/3

Installation of larger aluminium protection louvres JZR-6

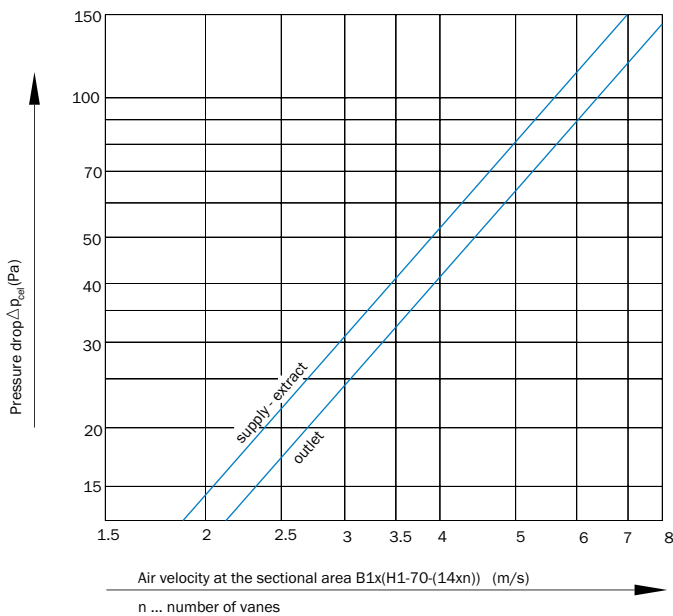
The combination by width:
Max. width B1 = 2000mm



The combination by height:
Max. height H1 = 2000 mm



Pressure drop diagram



Use the diagram to determine the total pressure drop in respect of air velocity at the free sectional area.

Example of calculation

JZR-5

$A_{ef} = B_1 \times (H_1 - 40 - (14 \times n))$ expressed in m^2 where n is a number of vanes.

$B_1 = 500$ mm, $H_1 = 400$ mm, $n = 8$

$Q = 1000$ m^3/h

$A_{ef} = 500 \times (400 - 40 - (14 \times 8)) = 124000$ $mm^2 \geq 0.124$ m^2

$v = (Q / 3600) / A_{ef} = (1000 / 3600) / 0.124 = 2.24$ m/s

Δp_{cel} from diagram Supply 18 Pa
Outlet <12 Pa

JZR-6

$A_{ef} = B_1 \times (H_1 - 60 - (14 \times n))$ in m^2 where n is a number of vanes.

$B_1 = 1600$ mm, $H_1 = 1800$ mm, $n = 34$

$Q = 20000$ m^3/h

$A_{ef} = 1600 \times (1800 - 60 - (14 \times 34)) = 2022400$ $mm^2 \geq 2$ m^2

$v = (Q / 3600) / A_{ef} = (20000 / 3600) / 2 = 2.7$ m/s

Δp_{cel} from diagram Supply 25 Pa
Outlet 20 Pa

Ordering key

JZR-6 / 3 BxH / ...
1 2 3 4

1 Protection louvre

JZR-6

JZR-5

2 Installation

3 only JZR-6

2 only JZR-5

3 Size

4 Pcs